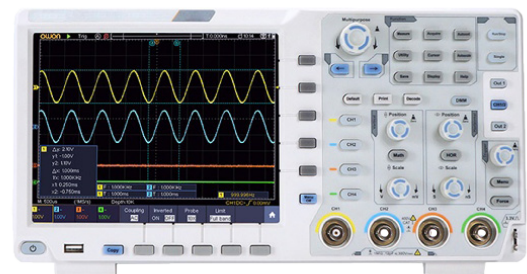


Features

- 40M record length, and 75,000 wfms/s waveform refresh rate
- low background noise, vertical sensitivity in 1 mV/div - 10 V/div
- multi-trigger, and bus decoding function
- SCPI, and LabVIEW supported

Applications

- Electronic circuit debugging
- Education and training
- Circuit testing
- Design and manufacture
- Automobile maintenance and testing



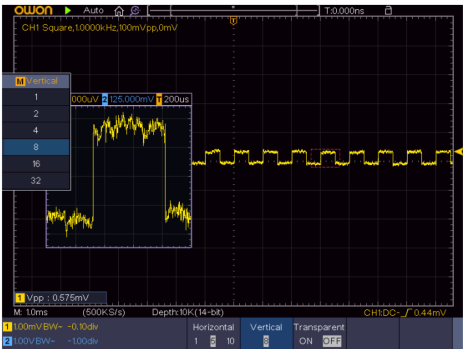
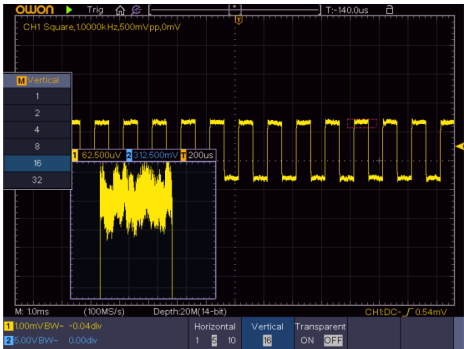
Model P2025 Datasheet v1.0
200 MHz Oscilloscope

Model P2025 Oscilloscope

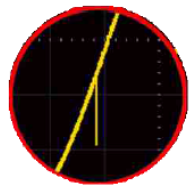
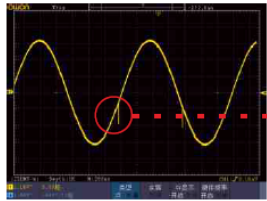
Model P2025

Key Features of the P2025

The P2025 introduces 12 / 14 bits hardware ADC, the precision is 16/64 times against other oscilloscope on market. It can observe the signal low down to 31.25µV/div.



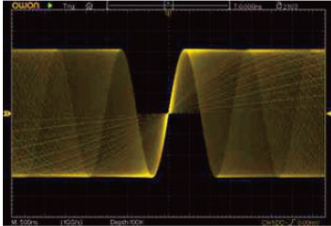
- Platform - restore the waveform detail fully



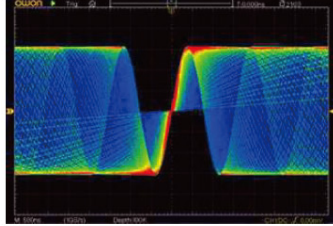
M Bas Type
RS232
I2C
SPI
CAN
UART

M TrigMode
Edge
Video
Pulse
Slope
Runt
Nth Edge
Windows
Logic

- Multi-level grayscale, and color temperature display



within certain unit time, more frequent one waveform pixel appears, more vivid it is



the frequency of waveform reflecting in color temperature value, larger the value is, more frequent the waveform appears

- Multi-trigger supported - Logic, Time-out, I2C, SPI, RS232, Runt, Windows, Nth Edge, and CAN
- Serial bus coding available in I2C, SPI, RS232, and CAN.
- Built-in multimeter module, with auto-scale, and data logging function
- Built-in dual-channel 25MHz / 50MHz arbitrary waveform generator module,



Model P2025

Model P2025 Oscilloscope

Key Features of the P2025 Cont.

with sample rate of 125MS/s / 250MS/s

- Its built-in WiFi module facilitates mobile device connecting with XDS series product, to get access to remote control, together with simultaneous measurement result display
- Its multi-point touch function improves operation efficiency considerably
- Optional battery makes floating measurement possible, advancing the operation convenience

Performance Specifications

Bandwidth	200 MHz
Sample Rate	1GS/s
Vertical Resolution (A/D)	8 bits
Record Length	40 M
Waveform Refresh Rate	75,000 wfms/s
Horizontal Scale (s/div)	1ns/div, 1000 step by 1 - 2 - 5
Rise Time (at input typical)	≤1.7ns
Channel	2+1 (external)
Display	8" color LCD, 800 x 600 pixels (optional 1024 x 768 pixels IPS display)
Input Impedance	1MΩ ± 2%, in parallel with 15pF ± 5pF (*, ** 50Ω ± 2%)
Channel Isolation	50Hz : 100 : 1, 10MHz : 40 : 1
Max Input Voltage	1MΩ ≤ 300Vrms; 50Ω ≤ 5Vrms
DC Gain Accuracy	±3%
DC Accuracy	average≥16: ±(3% reading + 0.05 div) for ΔV
Probe Attenuation Factor	0.001X - 1000X, step by 1 - 2 - 5
LF Respond (AC, -3dB)	≥10Hz (at input, AC coupling, -3dB)
Sample Rate / Relay Time Accuracy	±1ppm
Interpolation	sin(x) / x
Interval (ΔT) Accuracy (full bandwidth)	Single: ±(1 interval time + 1ppm x reading + 0.6ns); Average > 16: ±(1 interval time + 1ppm x reading + 0.4ns)
Input Coupling	DC, AC, and GND
Vertical Sensitivity	1mV/div - 10V/div (at input)
Trigger Type	Edge, Video, Pulse, Slope, Runt, Windows, Timeout, Nth Edge, Logic, I2C, SPI, RS232, and CAN (optional)
Bus Decoding	I2C, SPI, RS232, and CAN (optional)



Model P2025

Model P2025 Oscilloscope

Performance Specifications Cont.

Trigger Mode	Auto, Normal, and Single	
Vertical Range	$\pm 2V$ (1mv/div - 50mv/div), $\pm 20V$ (100mv/div - 1V/div), $\pm 200V$ (2V/div - 10V/div)	
Line / Field Frequency (video)	NTSC, PAL and SECAM standard	
Cursor Measurement	ΔV , and ΔT between cursors, ΔV and ΔT between cursors, and auto-cursors	
Automatic Measurement	Vpp, Vavg, Vrms, Freq, Period, Peak RMS, Cursor RMS, Vmax, Vmin, Vtop, Vbase, Vamp, Overshoot, Phase, Preshoot, Rise Time, Fall Time, +Width, -Width, +Duty, -Duty, Duty Cycle, Delay A→B ↑, Delay A→B ↓, +Pulse Count, -Pulse Count, Rise Edge Count, Fall Edge Count	
Waveform Math	+, -, ×, ÷, FFT, FFTrms, Intg, Diff, Sqrt, User Defined Function, digital filter (low pass, high pass, band pass, band reject)	
Waveform Storage	100 waveforms	
Lissajou's Figure	Bandwidth	full bandwidth
	Phase Difference	± 3 degrees
Communication Interface	USB host, USB device, USB port for PictBridge, Trig Out (P/F), LAN, and VGA (optional)	
Frequency Counter	available	
Power Supply	100V - 240V AC, 50/60Hz, CAT II	
Power Consumption	<15W	
Fuse	2A, T class, 250V	
Battery (optional)	3.7V, 13200mAh	
Dimensions (W × H × D)	340 x 177 x 90 mm	
Device Weight	2.60 kg	