

Application Note (Model 825, 865B & 875)

Fast Control Port with MDR 26 Pin Connector

Purpose

The measurement device can be controlled over an additional port for fast, time-critical settings like frequency changes. This application note explains the usage of the FastControl Port.

Table of Contents

Introduction.....	2
Configuring the FCP	2
8-bit Mode.....	3
Setting the RF frequency.....	3
Timing	5
SCPI & FCP Example	5
Selecting pre-defined RF Frequency	6
Timing	7
SCPI & FCP Example	7
16-bit Mode.....	8
Setting the RF Frequency and Amplitude	8
Timing	10
SCPI & FCP example	11
Selecting pre-defined RF Frequency	12
Timing	13
SCPI & FCP Example	13
Electrical Specification.....	14
Cable Assembly	15
Further Documentation.....	16

Introduction

For fast, time-critical settings like frequency changes, the device can be controlled over the Fast Control Port (FCP). It is a parallel port that can be operated in either '8-bit Mode' or '16-bit Mode'. If activated, the device's frequency and/or amplitude are controlled by the FCP. With FCP, memory is addressed and filled with frequency or amplitude information. To enable and configure the communication over FCP, the device must be configured in advance over SCPI.

Configuring the FCP

To select the operating mode of the Fast Control Port, the FCP must be configured with an SCPI command:

[[:SOURce]:FCPort:MODE 8|8B|8Bits|16|16B|16Bits

Configures the operation mode of the FCP.

*RST value: 16

Further related commands are documented in the Programmer's Manual[1].

8-bit Mode

'8-bit Mode' is limited to frequency control of one RF channel or to a common frequency on several channels. The frequency can either be selected by the index of a pre-defined frequency list or by sending the complete frequency word. On multi-channel devices, it is not possible to operate one channel with a list of frequencies and the other with a frequency word.

Setting the RF frequency and amplitude

The RF output signal can be configured via the FCP with

- The frequency word (FW). It is 48 bits wide, unsigned, and is calculated as $FW = \text{Frequency in Hz} * 256$.
- The amplitude word (AW). It is 16 bits wide, signed (two's complement), and is calculated as $AW = \text{Amplitude in dBm} * 127$.

8-bit mode is limited to only one set of one frequency and one amplitude word. All channels with FCP enabled will use the same set.

However, frequency vs. amplitude words may be used individually: one channel (e.g., 3) can be under FCP amplitude control, while another channel (e.g., 2) is under FCP frequency control.

The signal generator must be set up to be controlled by FCP with SCPI commands:

[[:SOURce#]:FCPort:CONTrol:FREQuency ON|OFF|1|0

Enables or disables FCP frequency control on the specified RF channel

*RST value: OFF

[[:SOURce#]:FCPort:CONTrol:AMPLitude ON|OFF|1|0

Enables or disables FCP amplitude control on the specified RF channel

*RST value: OFF

Complete SCPI command sequence for frequency mode:

SOUR<x>	Select the RF output
OUTP ON	Enables RF output
FREQ <x>	Sets initial RF output frequency
POW <x>	Sets RF output power
FCP:MODE 8	Sets FCP to 8-bit Mode
FCP:CONT:FREQ ON	Enables FCP frequency control

For amplitude mode, modify the last command:

FCP:CONT:AMPL ON Enables FCP amplitude control

Both modes can be combined to full frequency and amplitude control:

FCP:CONT:FREQ ON;AMPL ON Enables combined FCP frequency and amplitude control

The Frequency Word (FW) is written sequentially to address 0 to 11. Writing bit 47 (MSB) of the FW triggers the processing and updates of the RF output signal that is
 $RF\ Frequency = FW\ value * 1\ Hz / 256.$

The Amplitude Word (AW) is written sequentially to address 12 to 15. Writing bit 15 (MSB) of the AW triggers the processing and updates of the RF output signal that is
 $RF\ Amplitude = AW\ value * 1\ dBm / 128.$

In combined frequency and amplitude mode, writing the MSB of both words (global bit 63 = AW bit 15) triggers the update. This ensures simultaneous frequency and amplitude update at the RF output.

Address	Data
0	FW (frequency word) bits [3...0]
1	FW (frequency word) bits [7...4]
2	FW (frequency word) bits [11...8]
3	FW (frequency word) bits [15...12]
4	FW (frequency word) bits [19...16]
5	FW (frequency word) bits [23...20]
6	FW (frequency word) bits [27...24]
7	FW (frequency word) bits [31...28]
8	FW (frequency word) bits [35...32]
9	FW (frequency word) bits [39...36]
10	FW (frequency word) bits [43...40]
11	FW (frequency word) bits [47...44]
12	AW (amplitude word) bits [3...0]
13	AW (amplitude word) bits [7...4]
14	AW (amplitude word) bits [11...8]
15	AW (amplitude word) bits [15...12]

Timing

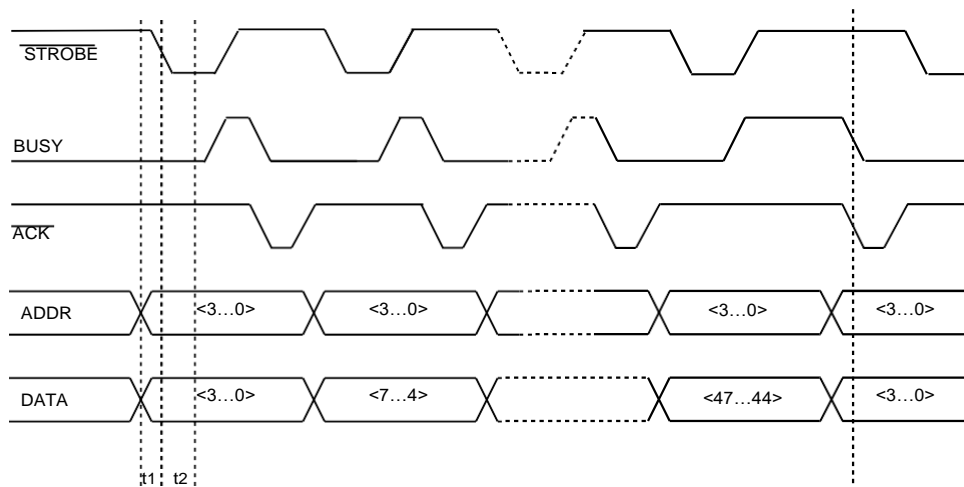


Figure 1 Programming of FW over FCP in '8-bit Mode'

Address and data are transferred at the same time. The signal generator reads the data upon a falling edge on the strobe line. The signal generator confirms the received data with ACK and informs the controller by the BUSY signal while processing the information.

Signals: Address A<3..0>, Data D<3..0>, STROBE, ACK, BUSY
 Setup-time t1: > -10 ns
 Hold-time t2: > 60 ns

SCPI & FCP Example

This is an SCPI example to set the RF output frequency of RF output 2 on a multi-channel system:

*RST	Reset device
OUTP2 ON	Enables RF output 2
POW 5	Sets RF output power to 5 dBm
FCP:MODE 8	set FCP to 8-bit Mode
SOUR2:FCP:CONT:FREQ ON	Enables FCP on RF output 2
*OPC?	Check if the operation is

After successfully configuring RF channel 2, writing FW 256'000'000'000 to the FCP leads to a 1 GHz RF signal.

FCP:CONT:FREQ ON must be enabled on each channel to provide the same frequency on multiple channels.

Selecting pre-defined RF Frequency

The device plays points from a pre-defined list of frequency settings with max in this mode. 20'000 entries. It is similar to a list sweep but with the FCP selecting the pre-defined frequency.

8-bit mode is limited to only one list word. All channels with FCP enabled will use the same list word.

However, the frequency list of each channel can be configured individually: e.g., point 1 can be 1 GHz for channel 1 but 2 GHz for channel 2.

The signal generator must be setup to be controlled by FCP with an SCPI command:

[:SOURce]:FCPort:CONTrol:LIST ON|OFF|1|0

Enables or disables FCP on the specified RF channel

*RST value: OFF

Complete SCPI command sequence to set up RF output to play selected frequency point:

SOUR <channel>

OUTP ON

Enables RF output

POW <x>

Sets RF output power

LIST:FREQ <f1>,<f2>,<f3>,...,<fn>

Defines a list of frequency

FCP:MODE 8

settings Sets FCP to 8-bit Mode

FCP:CONT:LIST ON

Enables FCP control

To select a pre-defined frequency, a 16-bit data list word (LW) must be written to address 0 to 3. Writing bit 15 (MSB) triggers the processing and update of the RF output signal.

Address	Data
0	LW (list word) bits [3...0]
1	LW (list word) bits [7...4]
2	LW (list word) bits [11...8]
3	LW (list word) bits [15...12]

Writing 1 to the list word (LW) plays <f1>, LW = 2 plays <f2> etc.

Timing

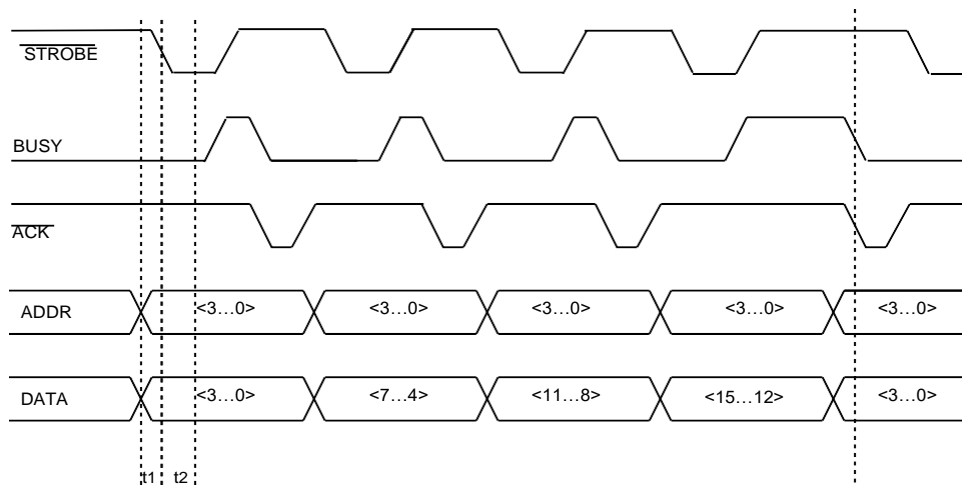


Figure 2 Sending list word over FCP in '8-bit Mode'

Address and data are transferred at the same time. The signal generator reads the data upon a falling edge on the strobe line. The signal generator confirms the received data with ACK and informs the controller by the BUSY signal while processing the information.

Signals: Address A<3..0>, Data D<3..0>, STROBE, ACK, BUSY
 Setup-time t1: > -10 ns
 Hold-time t2: > 60 ns

SCPI & FCP Example

This is an SCPI example to set up RF output 1 and RF output 3 on a multi-channel system to play selected frequency point:

*RST	Resets device
OUTP1 ON	Enables RF output 1
OUTP3 ON	Enables RF output 3
POW1 5	Sets RF output power to 5 dBm
POW3 7	Sets RF output power to 7 dBm
SOUR1:LIST:FREQ 1 GHz,1.5 GHz,2 GHz	Defines a list of frequencies
SOUR3:LIST:FREQ 1.2 GHz,1.25 GHz,1.3 GHz	Defines a list of frequencies
FCP:MODE 8	Sets FCP to 8-bit Mode
SOUR1:FCP:CONT:LIST ON	Enables FCP on RF output 1
SOUR3:FCP:CONT:LIST ON	Enables FCP on RF output 3
*OPC?	Checks if the operation is

After successfully configuring RF output 1 and 3, writing 1 to the list word (LW) over the FCP, would simultaneously play

- 1 GHz on RF output 1 with an output power of 5
- dBm

16-bit Mode

The '16-bit Mode' extends the '8-bit Mode' with multi-channel support. The frequency can either be selected by the index of a pre-defined frequency list or by sending the complete frequency word. On a multi-channel system, it is possible to operate each channel individually with a frequency list, the frequency, or the amplitude word.

Setting the RF Frequency and Amplitude

The RF output signal can be configured via the FCP with

- The frequency word (FW). It is 48 bits wide, unsigned, and is calculated as $FW = \text{Frequency in Hz} * 256$.
- The amplitude word (AW). It is 16 bits wide, signed (two's complement), and is calculated as $AW = \text{Amplitude in dBm} * 127$.

The signal generator must be set up to be controlled by FCP with SCPI commands:

[[:SOURce]:FCPort:CONTRol:FREQuency ON|OFF|1|0

Enables or disables FCP to set frequency word on the specified RF channel

*RST value: OFF

[[:SOURce#]:FCPort:CONTRol:AMPLitude ON|OFF|1|0

Enables or disables FCP amplitude control on the specified RF channel

*RST value: OFF

Complete SCPI command sequence for frequency mode:

SOUR<x>	Select the RF output
OUTP ON	Enables RF output
FREQ <x>	Sets initial RF output frequency
POW <x>	Sets RF output power
FCP:MODE 16	Sets FCP to 16-bit Mode
FCP:CONT:FREQ ON	Enables FCP control

For amplitude mode, modify the last command:

FCP:CONT:AMPL ON Enables FCP amplitude control

Both modes can be combined to full frequency and amplitude control:

FCP:CONT:FREQ ON;AMPL ON Enables combined FCP frequency and amplitude control

The Frequency Word (FW) is written sequentially to address 0 to 5. Writing bit 47 (MSB) of the FW triggers the processing and updates of the RF output signal that is $RF \text{ Frequency} = FW \text{ value} * 1 \text{ Hz} / 256$.

The Amplitude Word (AW) is written sequentially to address 6 to 7. Writing bit 15 (MSB) of the AW triggers the processing and updates of the RF output signal that is $RF \text{ Amplitude} = AW \text{ value} * 1 \text{ dBm} / 128$.

In combined frequency and amplitude mode, writing the MSB of both words (global bit 63 = AW bit 15) triggers the update. This ensures simultaneous frequency and amplitude update at the RF output.

RF Channel	Address	Data
1	0	FW (frequency word) bits [7...0]
1	1	FW (frequency word) bits [15...8]
1	2	FW (frequency word) bits [23...16]
1	3	FW (frequency word) bits [31...24]
1	4	FW (frequency word) bits [39...32]
1	5	FW (frequency word) bits [47...40]
1	6	AW (amplitude word) bits [7...0]
1	7	AW (amplitude word) bits [15...8]
2	16...21	FW (frequency word)
2	22...23	AW (amplitude word)
3	32...37	FW (frequency word)
3	38...39	AW (Amplitude word)
4	48...53	FW (frequency word)
4	54...55	AW (amplitude word)

Timing

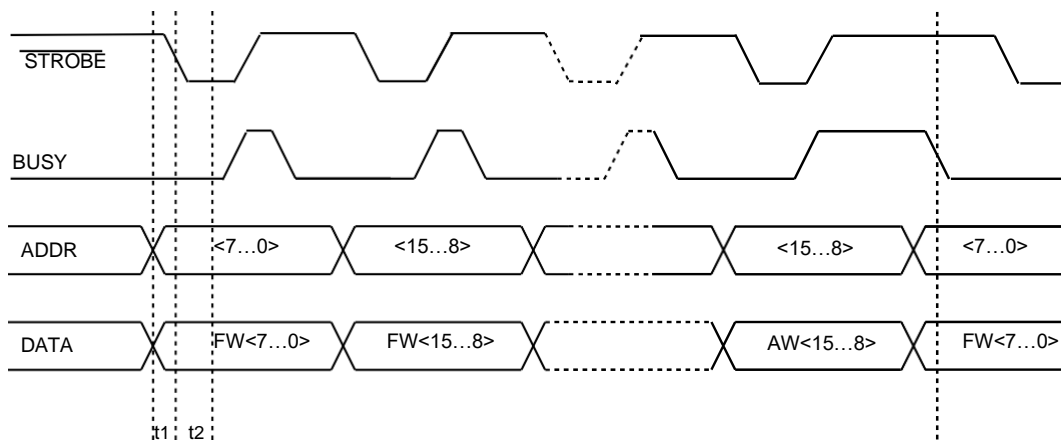


Figure 3 Programming of FW with FCP in '16-bit Mode'

Address and data are transferred at the same time. The signal generator reads the data upon a falling edge on the strobe line. The signal generator confirms the received data with ACK and informs the controller by the BUSY signal while processing the information.

Signals: Address A<7..0>, Data D<7..0>, STROBE, BUSY
 Setup-time t1: > -10 ns
 Hold-time t2: > 60 ns

SCPI & FCP example

This is an SCPI example to set the RF output frequency of RF output 2 on a multi-channel system:

*RST	Reset device
OUTP1 ON	Enables RF output 1
OUTP3 ON	Enables RF output 3
POW1 5	Sets RF output power to 5 dBm
POW3 7	Sets RF output power to 7 dBm
FCP:MODE 16	Sets FCP to 16-bit Mode
SOUR1:FCP:CONT:FREQ ON	Enables FCP on RF output 1
SOUR3:FCP:CONT:FREQ ON	Enables FCP on RF output 3
*OPC?	Check if the operation is

After successfully configuring RF channels 1 and 3, writing FW 256'000'000'000 to the FCP

- 1 GHz on RF output 1 with an output power of 5
- dBm

With FW revision > 0.152, for each RF channel, an individual frequency, and amplitude word

Selecting pre-defined RF Frequency

The device plays points from a pre-defined list of frequency settings with max in this mode. 20'000 entries. It is similar to a list sweep but with the FCP selecting the pre-defined frequency.

The signal generator must be set up to be controlled by FCP with an SCPI command:

[:SOURce]:FCPort:CONTrol:LIST ON|OFF|1|0

Enables or disables FCP on the specified RF channel

Complete SCPI command sequence to set up RF output to play selected frequency point:

SOUR <channel>

OUTP ON

Enables RF output

POW <x>

Sets RF output power

LIST:FREQ <f1>,<f2>,<f3>,...,<fn>

Defines a list of frequency

FCP:MODE 16

settings Sets FCP to 16-bit Mode

FCP:CONT:LIST ON

Enables FCP control

For each RF channel, a 16-bit data list word (LW) must be written to address 0 to 1 to select the pre-defined frequencies (see table below). Writing bit 15 (MSB) of a list word 1 triggers the processing and update of the corresponding channel's RF output signal.

RF channel	Address	Data
1	0	LW (list word) bits [7...0]
1	1	LW (list word) bits [15...8]
2	16	LW (list word) bits [7...0]
2	17	LW (list word) bits [15...8]
3	32	LW (list word) bits [7...0]
3	33	LW (list word) bits [15...8]
4	48	LW (list word) bits [7...0]
4	49	LW (list word) bits [15...8]

Writing 1 to the list word (LW) plays <f1>, LW = 2 plays <f2> etc.

Timing

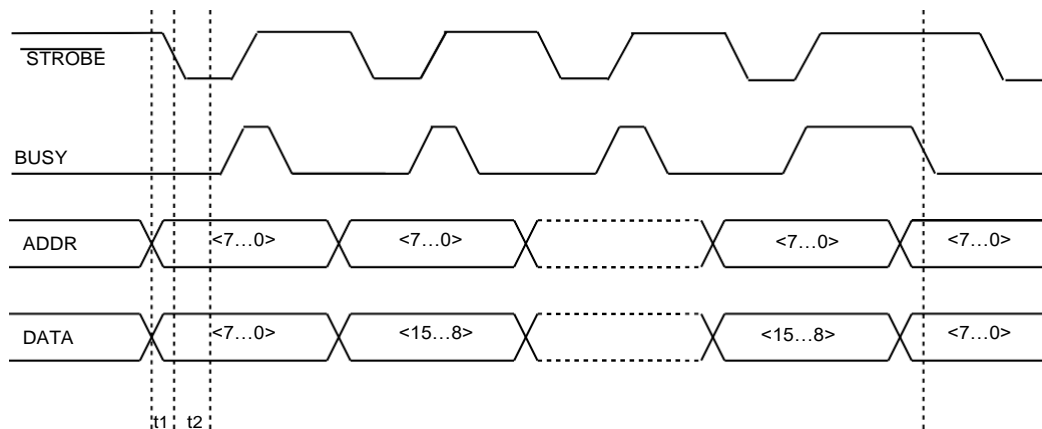


Figure 4 Programming of frequency list over FCP in '16-bit Mode'

Address and data are transferred at the same time. The signal generator reads the data upon a falling edge on the strobe line. The signal generator informs the controller by the BUSY signal while processing the information.

Signals: Address A<7..0>, Data D<7..0>, STROBE, BUSY
 Setup-time t1: > -10 ns
 Hold-time t2: > 60 ns

SCPI & FCP Example

This is an SCPI example to set up RF output 1 and RF output 3 on a multi-channel system to play selected frequency point:

*RST	Reset device
OUTP1 ON	Enables RF output 1
OUTP3 ON	Enables RF output 3
POW1 5	Sets RF output power to 5 dBm
POW3 7	Sets RF output power to 7 dBm
SOUR1:LIST:FREQ 1 GHz,1.5 GHz,2 GHz	Defines a list of frequencies
SOUR3:LIST:FREQ 1.2 GHz,1.25 GHz,1.3 GHz	Defines a list of frequencies
FCP:MODE 16	Sets FCP to 8-bit Mode
SOUR1:FCP:CONT:LIST ON	Enables FCP on RF output 1
SOUR3:FCP:CONT:LIST ON	Enables FCP on RF output 3
*OPC?	Check if the operation is

After successfully configuring RF output 1 and 3, writing 1 to the list word (LW) over the FCP, would simultaneously play

- 1 GHz on RF output 1 with an output power of 5 dBm
- dBm

With FW revision > 0.152, for each RF channel, an individual list word can be

Electrical Specification

Input signal: 0V to 5 V
 Input impedance: 4,7 kΩ
 Maximum toggle rate: 10 MHz

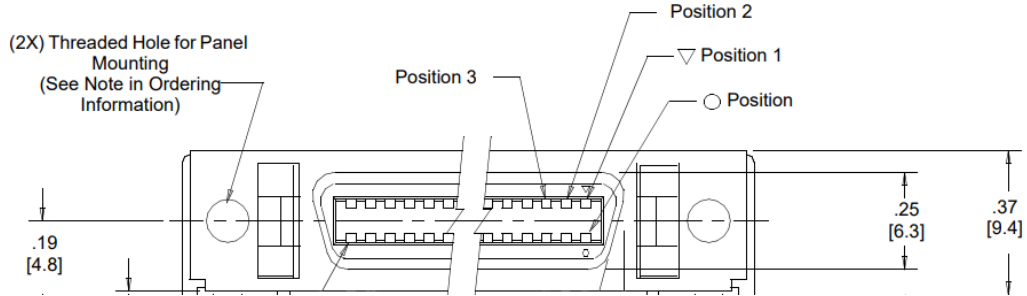


Figure 5 26-pin 3M Mini-D Ribbon connector

Pin	Signal		Pin	Signal	
	8-bit Mode	16-bit Mode		8-bit Mode	16-bit Mode
1	STROBE (in)	STROBE (in)	14	RFU	Data 3
2	Address 0	Address 0	15	RFU	Data 4
3	Address 1	Address 1	16	RFU	Data 5
4	Address 2	Address 2	17	RFU	Data 6
5	Address 3	Address 3	18	RFU	Data 7
6	Data 0	Address 4	19	GND	GND
7	Data 1	Address 5	20	GND	GND
8	Data 2	Address 6	21	GND	GND
9	Data 3	Address 7	22	RFU	RFU
10	ACK (out)	Data 0	23	GND	GND
11	BUSY (out)	BUSY (out)	24	RFU	RFU
12	RFU	Data 1	25	GND	GND
13	RFU	Data 2	26	GND	GND

RFU = Reserved for Future Use. Ports should not be connected

Cable Assembly

For the external wiring of the FCP port, a cable with 26 conductors and MDR-connector is available.

To build a custom cable, the individual components are listed below:

Description	Manufacturer Part Number
Connector Plug MDR 26 Pin	3M 10126-3000PE
Connector Backshell MDR 26 Pin	3M 10326-3210-006
Cable shielded 26 wire 28 AWG	3M 3600B/26

The table below lists the mapping of connector pin and wire colors.

Further Documentation

- [1] BNC Programmer's Manual for Signal Generators
<https://www.berkeleyelectronics.com/downloads>

Pin	Wire Color		Comments
	Solid	Band	
1	Black	Red	twisted with Pin 20
2	Black	White	
3	White	Black	
4	Blue	Red	
5	Red	Blue	
6	Red	White	
7	White	Red	
8	Red	Brown	
9	Brown	Red	
10	Blue	Black	
11	Black	Blue	
12	Brown	Black	
13	Black	Brown	
14	Orange	Red	
15	Red	Orange	
16	Red	Yellow	
17	Yellow	Red	
18	Black	Yellow	
19	Yellow	Black	
20	Red	Black	twisted with Pin 1
21	Orange	Black	
22	Black	Orange	
23	Green	Black	
24	Black	Green	
25	Green	Red	
26	Red	Green	

Berkeley Nucleonics Corporation

2955 Kerner Boulevard
San Rafael CA 94901
United States of

Phone 415 453 9955
Email info@berkeleynucleonics.com
Website: www.berkeleynucleonics.com

AnaPico Inc. of Switzerland

Europa-Strasse 9
8152 Glattbrugg
Switzerland

Phone +41 44 440 00 50
Email sales@anapico.com
Website: www.anapico.com