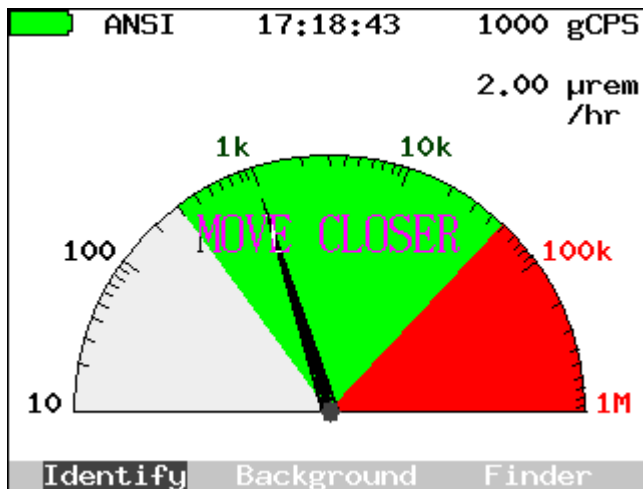


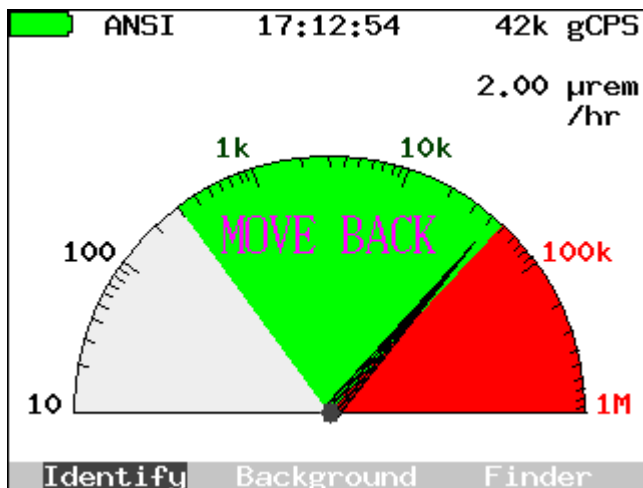
End User GUI Updates in the SAM 940 Eagle

New GUI updates in EAGLE, the latest operating system in the SAM 940, give end users the ability to set mission-specific thresholds for a variety of alarm conditions. Customers can now address a broader range of applications, from underground subway stations with high natural backgrounds to missions at sea with very low natural backgrounds. Our experienced staff of spectroscopists and health physicists can assist you in setting up the versatile Isotope Identifiers to perform exactly to your protocols. Some examples follow:



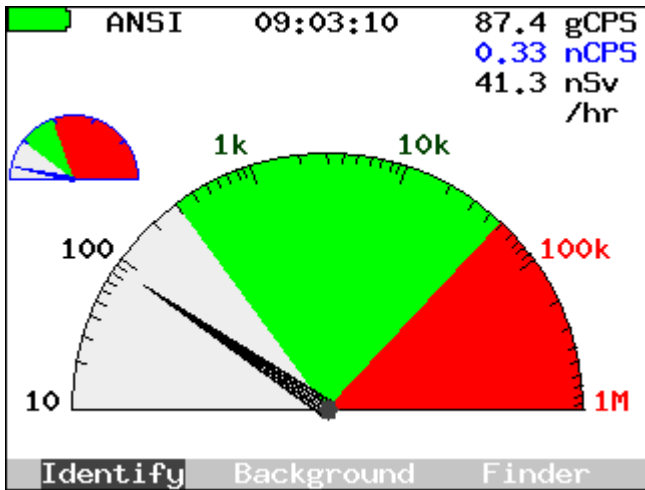
MOVE CLOSER

An optional prompt that is enabled by the user. It is triggered by a statistical count rate that needs to be increased to achieve an acceptable confidence level in isotopic confirmation.



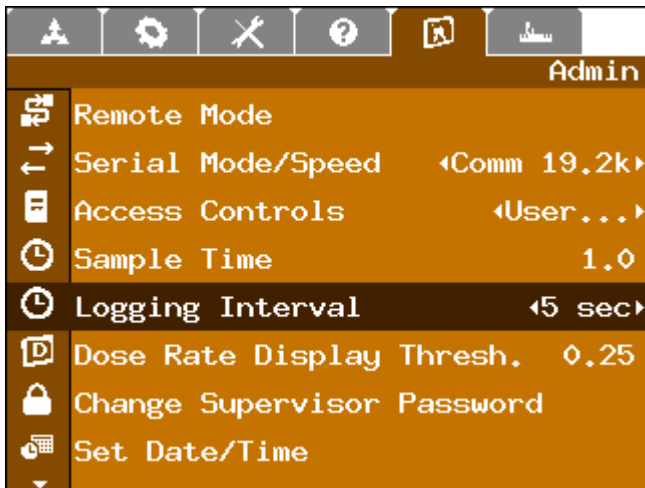
MOVE BACK

An optional prompt that is enabled by the user. It is triggered by a statistical count rate that is too high and could lead to a possible degradation of isotopic confirmation.



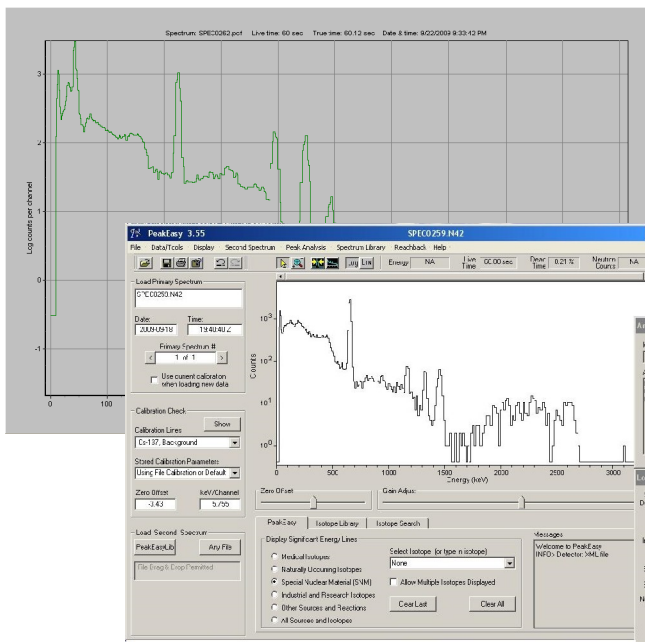
DUAL TACHOMETER

A handy feature on the SAM 940 that gives a graphical indication of Gamma and Neutron Count Rate. For the seasoned inspector, the correlation offers a quick indication of SNM. Neutron Counts (BLUE) are also available in real-time, and on all spectroscopic reports.



GPS LOGGING INTERVAL

A new feature in EAGLE which allows end users to obtain mission logs with spectroscopic and count rate data on an isotope-by-isotope basis. The data is archived in simple text so file sizes are manageable. Logging intervals as low as 1 second are possible, enabling effective archiving of GPS and count rate data in.



CAMBIO and PEAK-EASY SUPPORT

Choose from BNC's SAM 940 Viewer or use industry standard US DOE and US DHS supported options at no additional cost.